



Build Beyond Limits

*Strategic Partnerships for Successful
Projects*



/sāj/
Architecture

Bend and Portland, Oregon | saj-architecture.com

Learning Objectives

Our panelists will engage in a conversation about:

- 1. Better defining project needs through stakeholder engagement;*
- 2. Establishment of partnerships to address broader community needs;*
- 3. Strategic identification of nontraditional funding sources; and*
- 4. Creating communication strategies to foster support for projects as a much-needed community assets.*

1.5 LU/HSW

Speakers

Gresham-Barlow Health Center



Carla Gay, Executive Director, Innovation and Partnership, Gresham-Barlow School District



*Lisa Cline, MPH Chief Executive Officer
Wallace – A Community Health Center*



Speakers

Natural Resource Learning Facility



*Cory Torppa, Career and Technical Education (CTE)
Program Director*



Joan Huston, Director



Moderators



Amy Vohs AIA, ALEP, NCARB

SĀJ Architecture Principal



Jonah Jensen AIA, LEED AP, NCARB

SĀJ Architecture Principal



GRESHAM-BARLOW
STUDENT BASED HEALTH CENTER

Gresham-Barlow Student Health Center

Gresham-Barlow Student Health Center

School-Based Health Centers (SBHCs):

- Are medical clinics within a school or on school grounds that offer a full range of physical, behavioral, and preventive health services that meet each community's needs.*
- Provide services in a convenient and accessible environment, by licensed care providers, regardless of a student's ability to pay.*
- Are required to meet Oregon Health Authority quality standards to become certified.*





Natural Resources Learning Facility

Natural Resources Learning Facility

This program will:

- *Serve students throughout SW Washington.*
- *Apply scientific and forestry principles to forestry practices.*
- *Provide career preparation through hands-on experiences from plant identification and tree measurement to forest practice laws.*
- *Qualify as a graduation pathway academic credit equivalency.*
- *Lab experience will be in 30 acres of forested land in Kalama.*



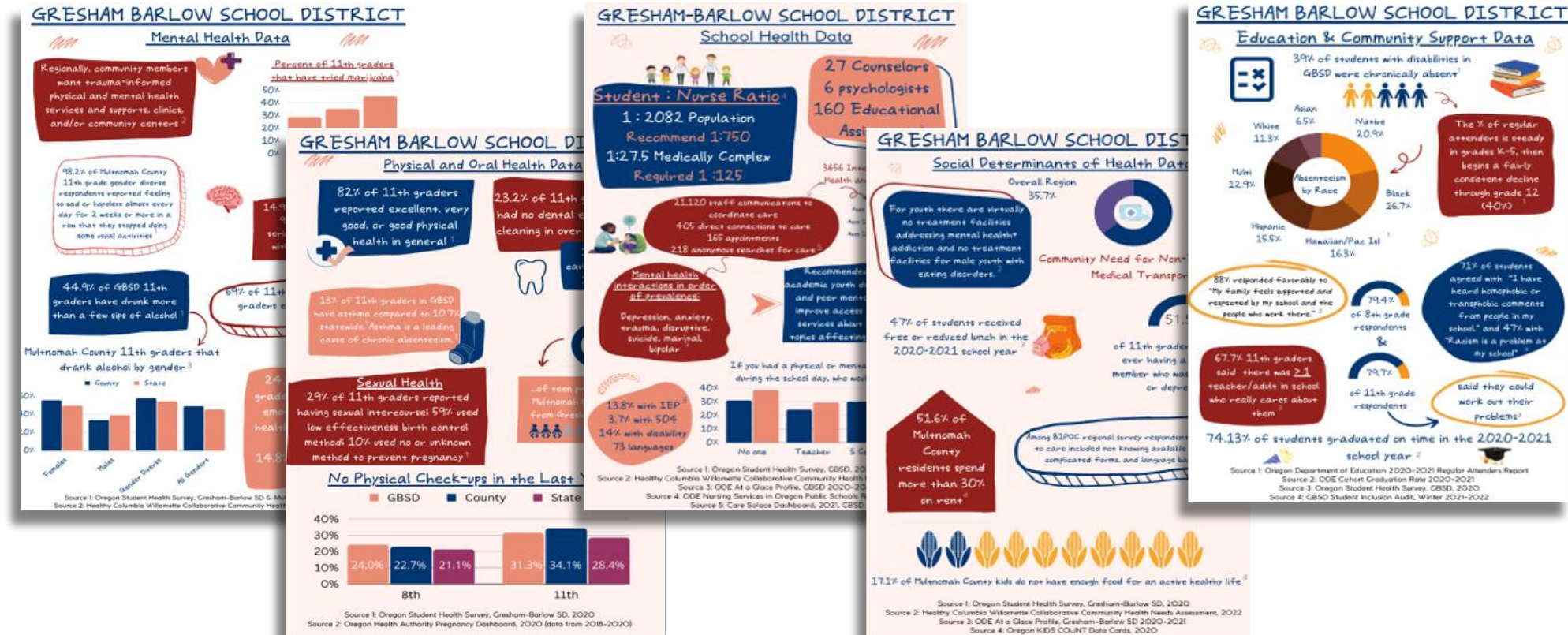
Comprehensive Engagement Processes

- *Lift voices of people impacted by school health services*
- *Build relationships between school and community partners*
- *Generate support*
- *Increases chances of success*
- *Empowers the community*
- *Community becomes your messenger*

“We need to stand up and talk about how health is important for us as people but also as students. When you are sick, like mental health or vision or dental, then you don’t come to school or participate as much. When we aren’t healthy, we just don’t connect to school or others ... it gets to us.”

– Current Gresham-Barlow School District Middle School Student

Comprehensive Engagement Processes Lead to Data-informed Decisions



Community Partnerships and Stakeholders

Each provides:

- *Critical data analysis*
- *Logistic support*
- *Certifications*
- *Input to shape focus on services needed*
- *Medical services*



Community Partnerships and Stakeholders

- Identify a community and industry need
- Build relationships between school and community employment opportunities
- Generate support through expanded learning opportunities



Creative Funding Sources: Student Health Center

- *Oregon Health Authority School Health Services Planning Grant (SHSPG)*
- *ARPA Funds - Pandemic Recovery Bill (2021-2024)*
 - *\$1.5 Million committed by House Representative Ricki Ruiz and Senator Chris Gorsek*
- *Senate Bill 5506 End of session Omni-bus bill requested by local legislators (2023-2025)*



Creative Funding Sources: Natural Resources Facility

- Proactive engagement with state legislators*
- Process lead by industry voices and needs*
- Legislative request of \$1.15 M from local legislator from capital budget for Design, Project Management and Permitting – Phase 1*
- Phase 2 Legislative request will occur at the end of this year for Construction*



Communication Strategies

- *Your community is your messenger*
- *Educate the community on reality of needs*
- *Know who your community trusts for information*
- *Counter negative voices with those of supportive community members and groups*
- *Design Advisory Committee – select participants who represent a broad range of voices*
- *Student voices are critical in designing with and for students*

Student Voices



Call to Action

As bond-funded initiatives face uncertainty, we need innovative solutions. Let's collaborate with stakeholders, community leaders, and legislators to explore nontraditional funding avenues. Together, we can make a lasting impact on our communities.



Thank you!